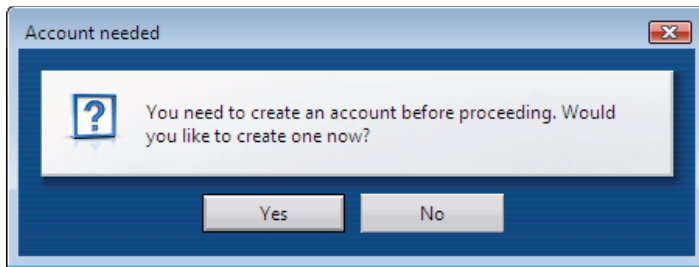


Setting Up Opera (Based on version 9.2)

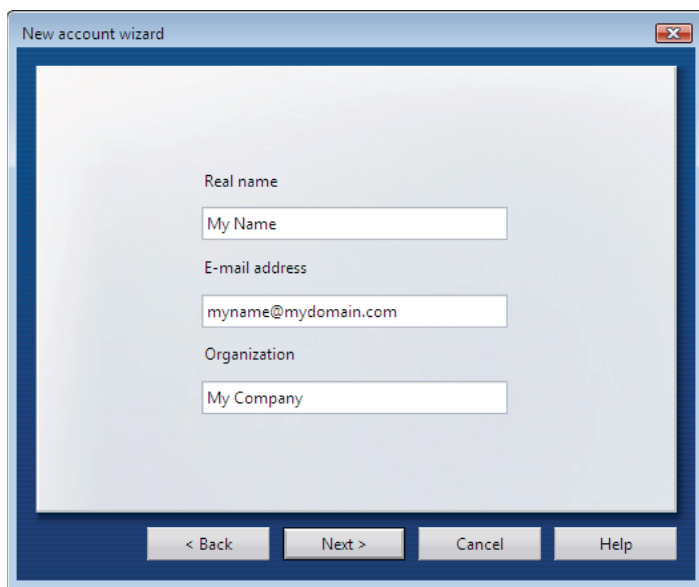
Note: Opera's free Web browser pioneered many of the features now standard on other browsers, such as tabs and pop-up ad blocking. It also includes a complete email client and is available for the Linux/Unix, Mac OS and Windows platforms.

Setting Up a POP3 Email Account

1. Select **Tools / Mail and Chat Accounts**.
2. The first time you choose this option, you'll see an **Account needed** setup wizard that will guide you through the steps of creating your email account. Click **Yes** to proceed and follow these steps:



3. Select what kind of account you would like to create—Select **Regular e-mail (POP)** and click **Next** to continue.



4. On the next window of the **New account wizard**, you will begin to enter your setup information:
 - **Real name**—This can be your name or the name of the company employee who is using this account.

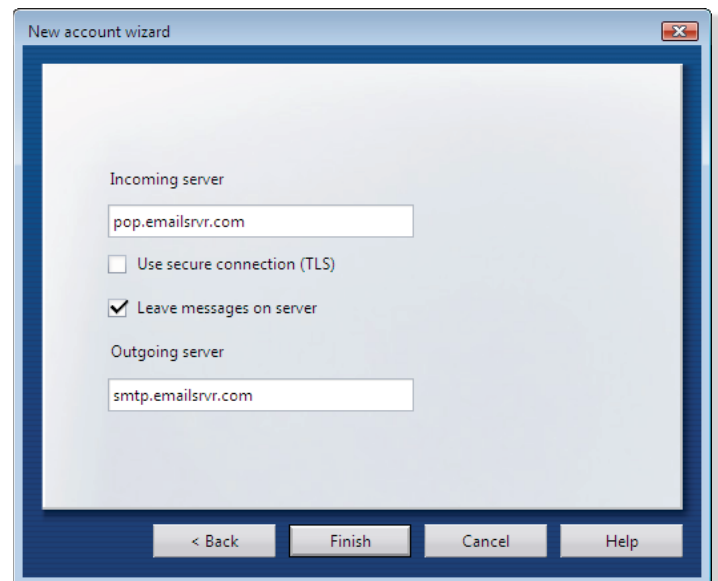
- **E-mail address**—Enter the address that's being used on this account, such as *myname@mydomain.com*.
 - **Organization**—Here you can enter your company's name, or leave it blank for a personal account.
5. In this wizard window, you will enter the following:
 - **Login name**—Enter your full email address here.
 - **Password**—Type your user password next.
 6. In the following setup window, you'll enter server information:
 - **Incoming server**—Enter the POP server name: *pop.emailsrvr.com*.
 - **Outgoing server**—Enter *smtp.emailsrvr.com* for the outgoing server.
 7. Click **Finish** to save your settings.

Note: The **Leave messages on server** option is checked by default. This will store your incoming messages whether they're read or not, at the expense of filling up your online mailbox's storage. Your options are further explained towards the end of this manual.

Changing Outgoing (SMTP) Servers

If you experience trouble sending mail, it is likely that your ISP is blocking the default Port 25; this is a very common process that's designed to protect the service from spammers. To fix this problem, follow these steps:

1. Select **Tools / Mail and Chat Accounts**.



2. Under [Manage Accounts](#), select your email account from the list and click [Edit](#).
3. Click the [Servers](#) tab.



4. Under [Outgoing SMTP server](#), enter *587* in the port number category.
5. Click [OK](#) to save your settings.

Assigning SSL Secure Server Settings

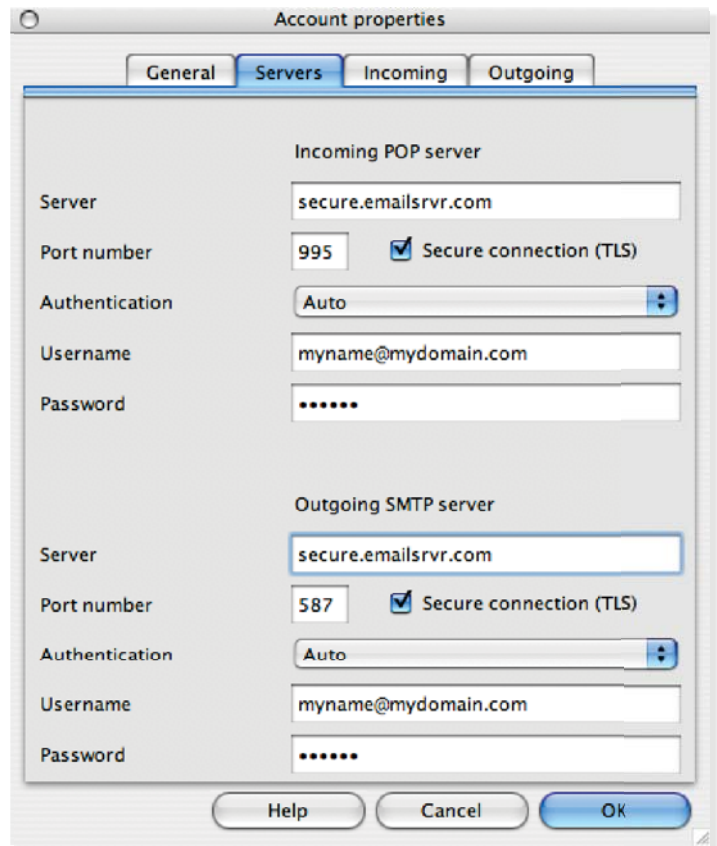
After setting up your mail account, you can follow the steps below to adjust your POP3 account settings to use the secure (SSL) server. The SSL protocol allows you to send and receive secure email messages. It does not, however, secure your messages on their passage from your hosted email servers to other email servers.

To use the secure incoming mail server

1. Select [Tools / Mail and Chat Accounts](#).
2. Under [Manage Accounts](#), select your email account from the list and click [Edit](#).
3. Click the [Servers](#) tab.
4. Under [Incoming Pop Server](#), change the server setting to *secure.emailsrvr.com*.
5. Check [Secure connection \(TLS\)](#).
6. Enter *995* as the port number.
7. Click [OK](#) to store your settings.

To use the secure outgoing mail server

1. Select [Tools / Mail and Chat Accounts](#).
2. Under [Manage Accounts](#), select your email account from the list and click [Edit](#).
3. Click the [Servers](#) tab.
4. Under [Outgoing SMTP server](#), change the server setting to *secure.emailsrvr.com*.
5. Check [Secure connection \(TLS\)](#).



6. Enter *587* as the port number.
7. Click [OK](#) to store your settings.

Leaving a Copy of Messages on the Server

To leave copies of your messages on the email server, follow these steps:

1. Select [Tools / Mail and Chat Accounts](#).
2. Under [Manage Accounts](#), select your email account from the list and click [Edit](#).
3. Click the [Incoming](#) tab.
4. Make sure that [Leave messages on server](#) is checked.
5. Click [OK](#) to store your settings.

Note: If you decide to leave messages on the server, you'll want to check your email online using the Web-based email feature from time to time to make sure your mailbox doesn't become overloaded. This is particularly true if you get email with file attachments.